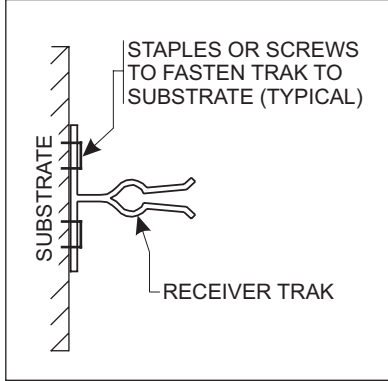


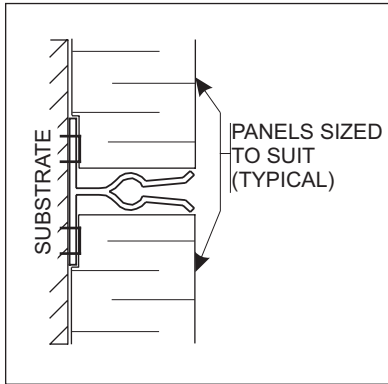
UTILI-T PANEL SYSTEM

Description

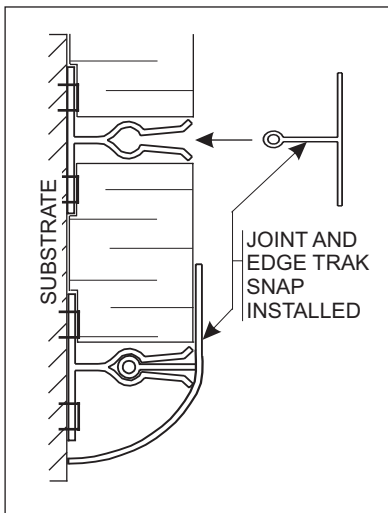
The Utili-T Panel System is designed to be a versatile option for clients who need a high performance sound absorbing panel at a very cost-competitive price. The unique combination of engineered Trak profiles along with the range of panel core materials available, makes the Utili-T Panel System an economic and easily applied choice.



The Snap-In Receiver Trak is applied to the wall where the joints and edges of the acoustic treatment are required.



The panel core is installed within the framework of the Receiver Trak.



The Snap-In Joint and Perimeter Traks are inserted into the Receiver Trak and the installation is complete.

Recommended Uses

The Utili-T Panel System is effective wherever a durable, sound absorbing panel is required. The system is suitable for many industrial, commercial, and residential applications and can be installed on virtually any type of surface (walls and ceilings).

Product Close Up

The key to the Utili-T Panel System's cost-effectiveness is the Snap-In Trak profiles. These profiles make installation a fast and simple process allowing virtually anyone to create a professional looking and functional wall or ceiling finish in a minimum amount of time.

Variations

The Utili-T Panel System is a site-applied system which means that **Custom is Standard**. The system layout (panel sizes, joint lines, colors) is designer's choice and is limited only by the components selected. Standard Utili-T Trak profiles are base white in color and available in several edge profiles. The Trak can be painted using acrylic-based paints to match any design. Panel cores may be selected to meet acoustic and aesthetic requirements. Core materials may be standard tiles, fabric or vinyl finished acoustic panels, tackboard or tackpanels, wood, foam, and many others. Core materials can be left unfinished for industrial applications or can have any type of finish applied (paint, fabric, other) for a fully functional, quality architectural finish.

Installation

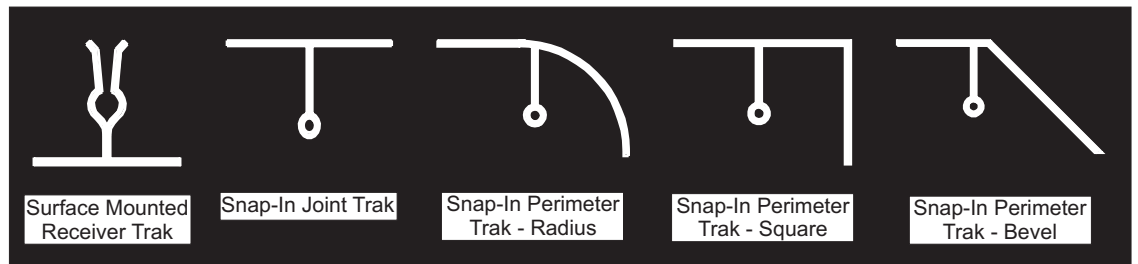
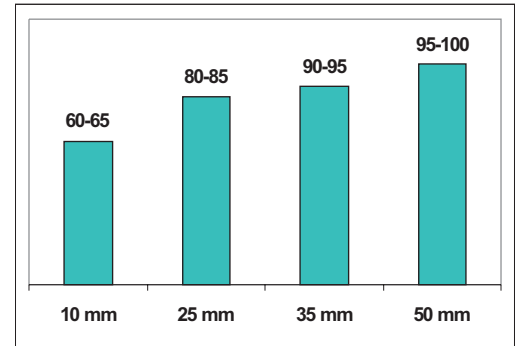
Installation of the Utili-T Panel System is a snap.

1. The Receiver Trak is applied to the surface
2. The insert panel is placed within the Receiver Trak framework
3. The joint and perimeter Trak are snapped over the assembly for a professional looking finish.



Acoustic Performance

Below is a graph showing the typical NRC ratings of some of our common thicknesses of acoustic fibreglass underlay.



FABRITRAK[®]
USA

FABRI-LOK[®]
CANADA

FABRITRAK[®] Utili-T TRACK Acoustic Panel System

1.0 GENERAL

1.1 Scope of Work

- .1 Supply / Supply and Install **Utili-T TRACK** Acoustic Panel system as manufactured by FABRITRAK[®].

1.2 Related Work Specified Elsewhere

- .1 Preparation of smooth flat and plumb substrate.
- .2 Architectural Woodwork, Masonry, Doors, Frames, Hardware Gypsum, Drywall, Plastering, Ceilings, Wall Coverings, Painting and Electrical Work.

1.3 Standards

- .1 The wall treatment system shall conform to ASTM E84 or CAN4 S102, Class 1 or A Fire hazard Classification.

1.4 Quality Assurance

- .1 The installation work of this section shall be performed by an authorized Installer with minimum 2 years experience installing the system.

1.5 Submittals

- .1 Submit manufacturer's product specification and other such data as may be required to show compliance with Contract Documents.
- .2 Submit manufacturer's standard warranty against defects in supplied materials and workmanship.

1.6 Product Handling

- .1 Store all materials off the ground and protected from dirt and dust.
- .2 Handle materials in a manner that will protect them from damage and soiling.

2.0 PRODUCTS

2.1 System Description

- .1 The system shall consist of site installed and fabricated, **Utili-T TRACK** Panel system.

2.2 System Components

.1 Utili-T Rigid Vinyl TRACK.

.1 PROFILE (specify): **S**quare Edge, **R**adius Edge, **B**evel Edge, Flat **J**oint, all with **B**ase **R**eceiver Track

.2 THICKNESS : 25 MM. (1 INCH)

.2 ACOUSTIC SURFACE (SOUND ABSORBER)

.1 TYPE (specify): Standard - White Matte Faced Acoustical Fiberglass
: Coated Face **A**spect Panel
: Vinyl Finished
: Fabric Finished
Other: (Please Specify)*

* Utili-T TRACK allows use of a variety of acoustic and tackable/acoustic surfaces from several manufacturers in a variety of finishes. Please call your local dealer to discuss selections.

.2 THICKNESS: 25 MM. (1 INCH)

3.0 EXECUTION

3.1 Existing Conditions

- .1 Examine the condition of the substrate and the conditions under which the work of this Section is to be performed. Notify the Contractor, in writing, of any unsatisfactory conditions. Do not proceed with work until unsatisfactory conditions have been corrected in a manner satisfactory to the installer.
- .2 Do not install acoustical wall panels in any space until:
 - .1 The space has been enclosed and is weather tight.
 - .2 All wet work has been completed and is dry.
 - .3 Painting is completed and wall base and floor covering installed.
 - .4 Adjacent and related work of other trades has been completed including Woodwork, Masonry, Doors and Frames, Hardware, Gypsum, Plastering, Wall Covering, Painting, Ceiling and Electrical Work.
 - .5 Ambient temperature and humidity are continuously maintained at values indicated for final acceptance of building or occupancy of space.

3.2 Installation

- .1 Field measure each wall area to establish the exact layout per elevations.
- .2 Apply the Utili-T TRACK framework in the areas designated to receive treatment, as shown on the drawings.
- .3 Fasten as required for specific substrates in accordance with manufacturers instructions.
- .4 Install the Utili-T TRACK framework plumb and straight.
- .5 Install the acoustic surface material, continuous and flush to shoulder of the track.
- .6 Install the acoustic surface material securely fastened, and ensure vertical and horizontal alignment and pattern match if necessitated by finish material and specification.

3.3 Cleaning and Protection

- .1 Clean Exposed surfaces of wall panels.
- .2 Remove surplus materials, rubbish, and debris resulting from the Utili-T TRACK installation.

END OF SECTION

For More Information Contact:

CANADA

FABRITRAK[®]

FABRI-LOK[®]

Phone: (403) 255-3550

Fax: (432) 686-2592

Email: info@wallworks.com

Website: www.wallworks.com