



WALLWORKS
ACOUSTIC.ARCHITECTURAL.PRODUCTS.INC.



Saskatchewan North Battleford Hospital, 2019

With an increased focus on the impact of architectural environment on health, Wallworks offers collaborative, attractive and environmentally sensitive, acoustic solutions. Our products contribute to LEED Points, or are compliant with WELL standards. For full specifications, please visit our website.

www.wallworks.com

WALLWORKS

ACOUSTIC.ARCHITECTURAL.PRODUCTS.INC.

Wallworks is a Canadian owned company, operating nationally and internationally since 1979. We are industry leaders in noise control and architectural specialties with offices located throughout Canada. Supported by a diverse product network of manufacturers and affiliates across the United States, UK, Middle East, Hong Kong, France, Germany, and Switzerland, we are able to seamlessly pair design innovation with acoustic excellence.

Our Acoustic Division manufactures and distributes a variety of products for acoustic solutions including acoustic wall and ceiling panels, ceiling baffles, sound diffusers and reflectors, acoustic sound barriers, acoustic wood wall and ceiling systems and our trademark Fabri-Lok® tensioned fabric system.

A more recent addition, our Acoustic Wood Products Division, provides our clients with a complete range of high quality specialty engineered wood products to create warmth, definition and performance.

Where a unique requirement exists, our custom-is-standard acoustic assemblies are engineered to create a perfect solution to meet our client's needs. Our collection of Architectural Décor Products, provide access to endless options that can cloak, transform, create illusion, define space and provide texture.

Wallworks Window Covering Division specializes in solar blinds for manual or motorized applications and provides professional installation services. Wallworks is a distributor for all types of window coverings, solar shades, vertical blinds, venetian blinds, draperies, curtains, projection screens and related hardware.

The scope is virtually unlimited, from manually operated vertical blinds through to the most complex motor-assisted stage curtain systems - we provide products to meet every client's vision.

With a focus on complete systems we are continually refining our product lines to provide our clients with the most progressive, distinctive, efficient and cost effective solutions available.



Head Office: 424-51 Ave SE, CALGARY, AB, T2H 0M7 T: 877.829.2550 F: 855.896.8893

Vancouver.Calgary. Edmonton.Regina.Saskatoon.Winnipeg.Toronto.Ottawa.Montreal

www.wallworks.com

info@wallworks.com



FABRIC AS AN ARCHITECTURAL FINISH



FABRI-LOK[®]
Tensioned Fabric System

THE SYSTEM: The FABRI-LOK® Tensioned Fabric System is a proprietary product that enables a large variety of textile goods to be installed over new and existing surfaces. The framework is comprised of fire retardant, rigid vinyl locking channels which when applied to a wall or ceiling area creates a space that may be made either acoustic, tackable, reflective or combination thereof. The sub-surfaces (acoustic, tackable, nailable, or combinations) are installed within the perimeter of the framework and sandwiched between the fabric and the wall (substrate). Fabric is then stretched over the framework. A purpose made tool inserts the fabric into the framework's jaws securing it in the storage channel, resulting in a clean, smooth, finished edge.

APPLICATIONS AND USAGE: The system may be applied to walls, ceilings, doors, columns, archways, partitions, and other surfaces. Typical areas of installation are lobbies, corridors, elevators, reception rooms, executive offices, boardrooms, conference rooms, theatres and auditoriums, dining rooms, teleconference and audio/visual rooms, computer rooms, open office areas, home theatres and specialty museum applications.

WALL OBSTACLES NO PROBLEM: Due to the designed flexibility of the FABRI-LOK® System, the framework may be applied around doors, windows, archways, pillars, and circular shapes in a neat, clean manner. The installation of lights, artwork, electrical outlets and other types of penetrations are easily accommodated. Consult your representative for details.

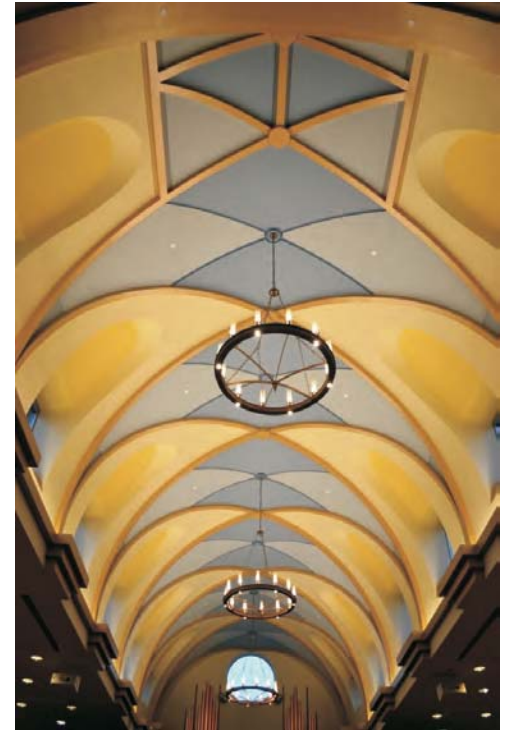
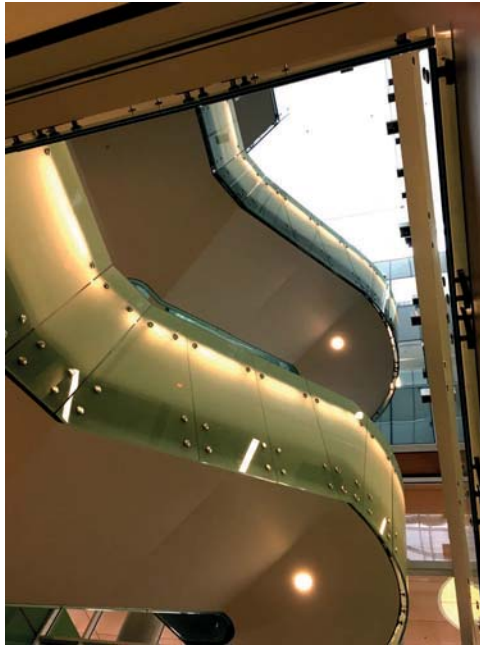
FABRIC SELECTION: The FABRI-LOK® System is designed to accommodate most fabrics, leathers and some wall carpets. Translucent fabrics will require the addition of a liner to prevent read through of panel core. Fabrics containing over 17% by content of fibers such as rayon, acetate, or spun nylon require an acrylic back coat to ensure fabric remains taut once installed.

LOW MAINTENANCE AND CHANGE-ABILITY: Most fabrics may be cleaned by vacuuming or with standard spot removal techniques. If required, finishes installed with FABRI-LOK® can be removed and replaced on site, without having to remove the panel core and frame, preventing down time and otherwise expensive repairs.

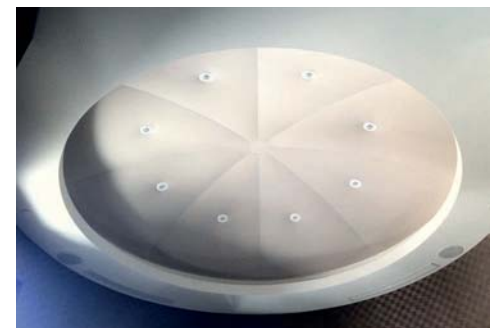
PANEL CORE: The FABRI-LOK® System framework provides a recessed area for installation of different densities and types of panel cores. Panel cores may be sound absorbent, tackable, reflective, installed singly or in combination, to achieve virtually any acoustic requirement.



DESIGN ADVANTAGES: The FABRI-LOK® System can be applied over virtually any substrate (drywall, brick, concrete, tile, steel) with minimal wall preparation. The system is site-built so proper alignment of panels and coordination with other architectural details is insured. Since the system is not prefabricated, design changes may be made on site; prior to installation. The System is designed to accommodate existing site conditions, with profiles to serve the purpose without "building out" or "customizing" the framework or the wall details to suit the design.



INSTALLATION TECHNIQUES: The FABRI-LOK® Systems versatility allows the designer or acoustic consultant to select the application which best suits their needs. There are three basic styles of Track. One style allows a flush fabric finish to ceilings, corners, baseboards and adjoining walls, another style offers a finished edge, suitable for island panels with exposed edges, while another is for tightly adjoining panels. In addition there are three standard edge profiles; square, round and bevel. Custom profiles to suit your particular requirements are available upon request.



“CUSTOM IS STANDARD” with the choice of the following installation options:

- Individual abutted Vertical Panels, unlimited in height - the fabric determines maximum width. Choose either: square (monolithic), radius bevel edge, or combination.
- Individually abutted Horizontal Panels, unlimited in width - the fabric determines maximum height. Edges may be square (monolithic), radius or bevel.
- Reveals - fabric panels may be designed in combination with matching or contrasting fabric, laminate, veneer, chrome, or brass reveals in square, radius or bevel profile edges for décor coordination or dimensional effect - vertically, horizontally, or outline framed.
- One continuous fabric expanse comprised of unobtrusive tailored, seams allows much larger than fabric width panels.
- The system can be made to conform to almost any surface contour - convex, concave, circular, irregular, or angular configurations.
- Three dimensional panels.



CUSTOM ACOUSTICS: To accommodate the needs of additional depths for some acoustic requirements the Trak is mounted on purpose made battens to create the depth required. Acoustic underlay may be configured with septums or tuned combinations to allow one to meet specific acoustic performance criteria.



THERMAL QUALITIES: (“R” Factor: Resistance to Heat Gain or Loss) The FABRI-LOK® System installed over typical interior walls can increase the “R” Factor by 22% to 35%. The percentage increase will vary depending upon the exterior wall construction and the type and thickness of underlay chosen.



FABRI-LOK® System adds the finishing touch with:

- Fabrics that perfectly match or coordinate with furniture or carpeting.
- Choice of acoustic, tackable, or combination underlays.
- A unique Trak system offering choice vertical, horizontal, curved, angular or irregular panel configurations manufactured to exacting tolerances.





Sculpted Panels - University

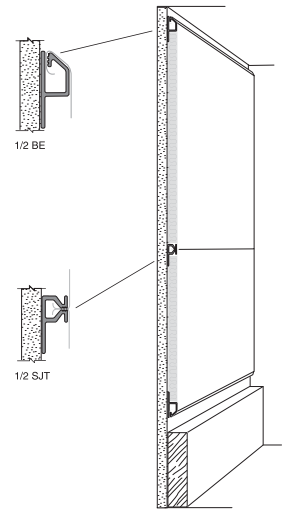


Fabric Murals - Broadcasting Station



Fabric Murals - Children's Hospital

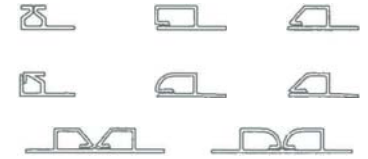
APPLICATION EXAMPLE



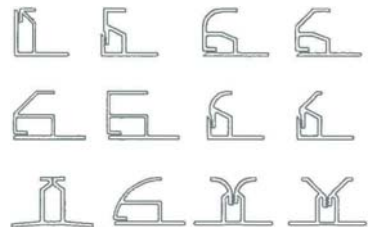
3/8" TRACK



1/2" TRACK



1" TRACK



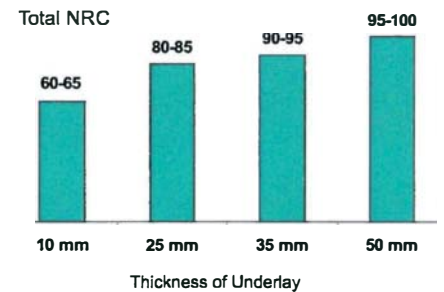
CUSTOM TRACK



2" TRACK



GENERAL ACOUSTIC DATA





FabriSPAN® Ceiling System - The Seamless Sound Solution for Ceiling Applications

The Fabri Span Ceiling System is comprised of three elements:

- FabriSpan® ultra wide width stretch fabric.
- FabriSpan® heavy wall Ceiling Trak, specially designed for wide width ceiling projects.
- Sound absorbing material as required.

FabriSpan® fabric is combined with FabriSpan® Ceiling Trak and an acoustical infill to enhance the look and acoustic experience of the space. With the availability of fabrics up to 16 feet wide the design and acoustic possibilities are endless. FabriSpan® can be used in conjunction with lighting applications, HVAC and fire sprinklers to produce a clean, seamless finish.

FabriSpan® ceiling fabric is available in white, off white and ivory to add a warm and engaging look to a room. Want a more dramatic look? Check out FabriColor, a unique colour match program in which Fabri-Lok® System is able to match our fabrics to any colour imaginable, from Pantone to Paint Chip colours, another way that Fabri-Lok® System creates a truly customized appearance.

FabriSPAN™ Properties and Values

Colours	White/Off White /Ivory Sky (Custom Colours Available)
Weight per Sq Ft	8.5 oz
Construction	Warp Knit
Fabric Widths Available	6' (1.85m) 10'(3.0m) 16'(4.8m)

FabriSPAN™ System Values*

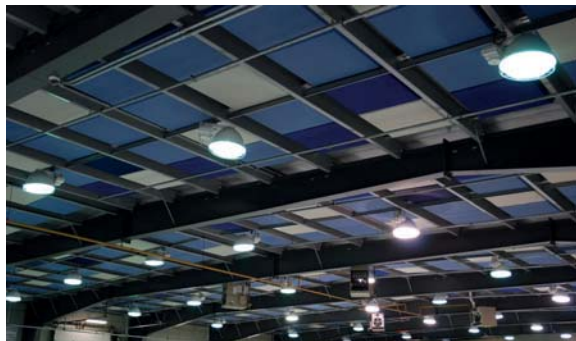
NRC Rating (ASTM C 423) 1" - 1-3/8"	.85
Flame Spread (ASTM E 84)	25 FSR
Flame Spread (CAN/ULC S102)	25 Flame Spread Rating (FSR)

*System Values include FabriSpan® Track, Infill and FabriSpan™ Fabric



Wallworks Acoustic Architectural Products Inc. has a complete range of standard and custom pre-manufactured acoustic ceiling and wall panels available in a wide array of styles and colours to suit any design requirement.

Flexible in Form and Function - Wallworks Modular Wall and Ceiling Panels offer a variety of acoustic cores, edge profiles, and vinyl or fabric finishes to select from.



Description

Wallworks Modular Wall and Ceiling Panels are the premiere choice for applications which require fully pre-manufactured, high performance acoustic panels. Wallworks Modular Wall and Ceiling Panels can be acoustically "tuned" to provide specific absorption characteristics while providing a superior architectural finish.

Recommended Uses

Wallworks Modular Wall and Ceiling Panels are suited for either wall or ceiling applications using a variety of exposed or concealed mounting systems. The panels may be mounted directly against a substrate, or floated to alter the absorption characteristics. Areas that can benefit from the use of Wallworks Modular Wall and Ceiling Panels include schools, theatres, offices, media rooms, restaurants, assembly areas, arenas, rinks, swimming pools, and more.

Product Close Up

Wallworks Modular Wall and Ceiling Panels provide exceptional flexibility for design and application while maintaining high sound absorption qualities. The panels have standard and custom edge profile options and can be finished with a selection of acoustically transparent fabrics, vinyls or textured paintable surfaces to match or contrast with virtually any design requirement.

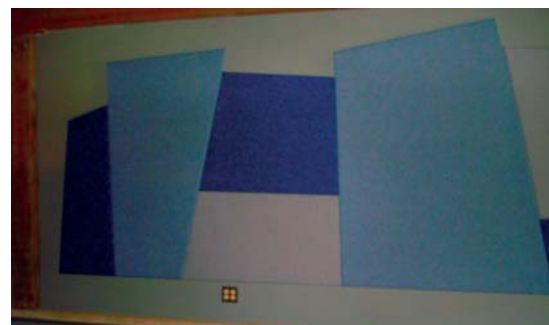
Fire Performance

Wallworks Modular Wall and Ceiling Panels have been tested by CAN/ULC S102 performance standards to meet flame spread (FSR) requirements Canada-wide.

Variations

Standard Wallworks Modular Wall and Ceiling Panels are constructed with a core of high density fibreglass board in thickness from 12 mm (1/2") to 100 mm (4") reinforced with a chemically hardened edge. Panel sizes may be based upon site requirements with some restrictions relevant to board size and application.

Edge profiles available are - Square (standard), 1:1 Bevel, 1:2 Bevel, Ogee, 1:1 Radius, and 1:2 Radius. The panels may be finished (wrapped) in a wide selection of different types of fabrics or vinyls - patterned, plain or custom printed. Custom edge profiles and finishes are available. Please contact our office for further information.



Acoustic Performance

NRC Rating:

1/2"	.50 - .60
1"	.80 - .90
1 1/2"	.90 - 1.00
2"	1.05 - 1.15



SPECIFICATIONS:

PART 1 - GENERAL

1.1 SCOPE OF WORK

- .A Supply and Install WALLWORKS® Wall and Ceiling Panels as supplied by WALLWORKS Acoustic Architectural Products Inc.. (Phone: 403-255-3550, Fax 403-686-2592) and as required by contract documents.
- .B Related Work Specified Elsewhere
 - .1 Preparation of smooth flat and plumb substrate.
 - .2 Architectural Woodwork, Masonry, Doors, Frames, Hardware Gypsum, Drywall, Plastering, Ceilings, Wall Coverings, Painting and Electrical Work.

1.2 STANDARDS

Unless otherwise indicated, materials and assemblies forming part of this work section have a flame spread rating of 25 or less in accordance with CAN/ULC S102-10.

1.3 QUALITY ASSURANCE

The installation work of this section shall be performed by an authorized Installer/Dealer certified by the manufacturer. Submit in writing to the Owner, through the Architect, the manufacturer's Installer/Dealer certification.

1.4 SUBMITTALS

- .1 Submit manufacturer's product specification and other such data as may be required to show compliance with Contract Documents.
- .2 Submit duplicate sample panels, 10" x 10" with the specified finish and mounting system for Architect's review prior to fabrication.
- .3 Submit manufacturer's standard one-year warranty against defects in supplied materials and workmanship.

1.5 PRODUCT HANDLING

- .1 Store all materials off the ground and protected from dirt and dust.
- .2 Handle materials in a manner that will protect them from damage and soiling.

PART 2 - PRODUCTS 2.1

WALL PANELS

- .1 CORE: 4 to 6 lbs/ft3 density, non-combustible and dimensionally stable fiberglass. [1/2"] [1"] [2"] [3"] thick fiberglass. Ensure that the panels do not twist, warp, bow or bend after installation
- .2 MOUNTING:
 - .1 Adhesive: Apply standard wall adhesive as per manufacturer's recommendations, on the back of panels, with a maximum spacing of 36" on the horizontal and 24" on the vertical (min. 4 spots per panel).
 - .2 Mechanical: Mechanically fasten galvanized steel (or aluminum) clips on the back of the internally reinforced panels, with a matching reversed track, in 2" lengths leveled and attached to the wall surface. The maximum spacing of the clips shall be 36" on the horizontal and 48" on the vertical (min. 4 pieces per panel).

NOTE:

- .1 Select thickness of fiberglass as per acoustical value requirements.
- .2 For tackable panels, use tackable surfaced Fiberglass (or) 1/8" high density cork may be laminated to the core beneath the fabric.
- .3 For High Impact Resistant panels use Fiberglass Scrim Facing laminated to the Fiberglass core beneath the fabric (or) High Density (18 lb.) Glastrait or equal laminated to the Fiberglass core beneath the fabric. Optionally the edges may be PVC hardened and have a minimum hardness of .42 on the Barcol scale.

2.2 CEILING PANELS

- .1 CORE: The core of the panels shall be made of 4 to 6 lbs/ft3 inert non-combustible and dimensionally stable fiberglass. The panels shall not twist, warp, bow or bend after proper installation and they shall have a nominal dimension of _____ X _____. [The edges of the panels shall be PVC/resin hardened and have a minimum hardness of .42 on the Barcol scale.
- .2 MOUNTING: Mount the panels on _____ X _____ module exposed or concealed "T-bar" system or other suspended system.

NOTE:

- .1 For fabric: Specify manufacturer's name, type of fabric, content, pattern repeat, width, weight, and colour/s. For vinyl: Specify manufacturer's name, type of vinyl, weight, colour and if perforated, size of perforation and percentage open area. Finish shall be stretched taut, laminated on the face and edges and with a return of 1-1/2" onto the back. Finishing material must be seamless.
- .2

PART 3 - EXECUTION

3.1 EXISTING CONDITIONS

- .1 Examine the condition of the substrate and the conditions under which the work of this Section is to be performed. Notify the Contractor, in writing, of any unsatisfactory conditions. Do not proceed with work until unsatisfactory conditions have been corrected in a manner satisfactory to the installer.
- .2 Do not install wall or ceiling panel until:
 - .1 The space has been enclosed and is weather tight.
 - .2 All wet work has been completed and is dry.
 - .3 Painting is completed and wall base and floor covering installed.
 - .4 Adjacent and related work of other trades has been completed including Woodwork, Masonry, Doors, and Frames, Hardware, Gypsum, Plastering, Wall Covering, Painting, Ceiling and Electrical Work.
 - .5 Ambient temperature and humidity are continuously maintained at values indicated for final acceptance of building or occupancy of space.

3.2 INSTALLATION

- .1 Install the panels plumb and straight as per manufacturer's instructions.
- .2 Co-ordinate work with mechanical and electrical trades.

3.3 CLEANING AND PROTECTION

- .1 Clean exposed surfaces of wall panels.
- .2 Remove surplus materials, rubbish, and debris resulting from the installation.
- .3 Cover fabric panels with clear vinyl if required by site conditions and specification.



Description

Dimensions high impact acoustical panels are the premier choice for applications that require unique, high performance acoustic panels. Easy to install and available in a wide range of fabrics, sizes and shapes.

Core Material

High density rigid acoustical fibreglass containing 46% post-consumer content.

Fire Performance

CAN/ULC S102: Flame Spread Index 25 or less. Smoke Developed Index 50 or less.

ATSM E84: Flame Spread Index 20 or less. Smoke Developed Index 0.

Thickness

Available in 1-1/2" to 4-1/2".

Panel Sizes

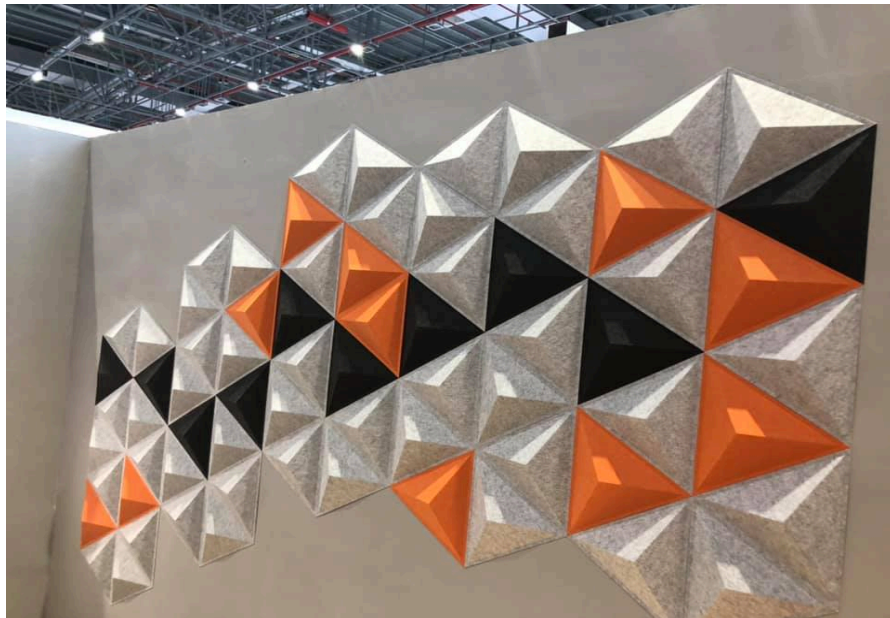
Standard 12"x12", 24"x24", 24"x48"
Custom sizing available

Mounting Options

Z-Clip, Impaling Clip or Adhesive direct to wall

Acoustical Performance

	125 Hz	250 Hz	500 Hz	1000 Hz	2000 Hz	4000 Hz	NRC
1-1/2"	0.32	0.75	0.94	0.98	1.01	1.04	0.95



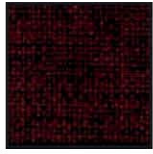
Available Colours



B-010



B-020



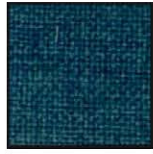
B-030



B-040



B-050



B-060



B-070



B-080



B-090



B-100



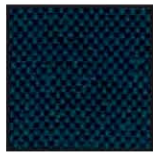
B-110



B-120



B-130



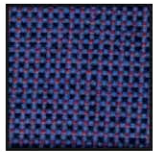
B-140



B-150



B-160



B-170



B-180



B-190



B-200



B-210



B-220



B-230



B-240



B-250



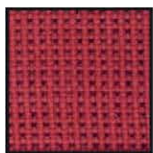
B-260



B-270



B-280



B-290



B-300



B-310



B-320



B-330



B-340



B-350



B-360



B-370



B-380



B-390



B-400



B-410



B-420



B-430

Explore color, dimension and detail.

PET Acoustic Panels

Wallworks eKÖR PET recycled panels provide outstanding sound absorption and can instantly create distinctive work environments



Description

eKÖR panels are sound absorbing panels developed with environmental friendliness in mind. eKÖR offers additional benefits compared to traditional acoustic board material that allows it to be installed as is with no covering. These include higher tack-ability and resiliency, as well as being free of allergens, toxins, irritants, binding agents and formaldehyde.

Core Material 60% PET-recycled fiber and 40% PET-virgin fiber, and are 100% recyclable.

Fire Performance

ASTM E84 and
CAN/ULC S102 FSR

Thickness

Available in 3mm, 9mm, 12mm, 25mm.

Panel Sizes

Standard 1200mm x 2400mm
Custom shapes, sizes and perforations available

Mounting Options

Concealed Nail, Decor Screw, Impalit Strip, two-sided tape, or Adhesive direct to wall

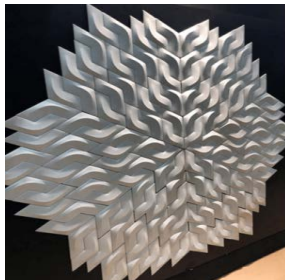
Applications

Theaters & home theaters
Gymnasiums & multipurpose rooms
Commercial & office buildings
Studios & production houses
Restaurants & night clubs
Government & municipal buildings
Schools & universities
Industrial & manufacturing facilities

Acoustical Performance

Thickness	Mount	125Hz	250Hz	500Hz	1KHz	2KHz	4KHz	NRC
1/2"	Type A	0.07	0.09	0.16	0.47	0.91	0.75	0.40
1/2"	Type E200	0.69	0.92	0.96	0.76	0.79	0.74	0.85

Type A - signifies panels that are mounted/installed directly onto a wall or ceiling.
Type E200 - signifies panels that are installed with 200mm air space behind.



Standard Colours - 9mm thickness

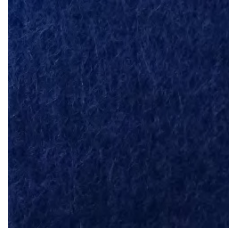
B-08 Red



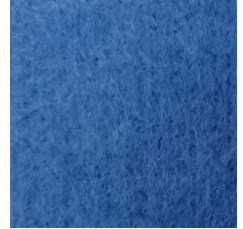
B-51 Emerald



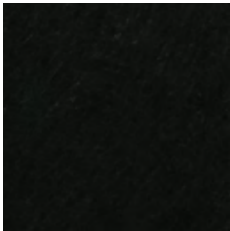
B-01 Blue



B-25 Sky Blue



B-13 Black



B-36 Moonlight Grey



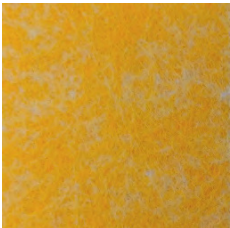
B-11 Silver Grey



B-30 Water Grey



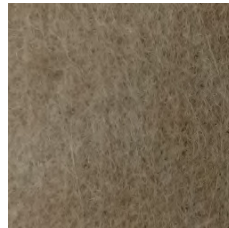
B-05 Saffron



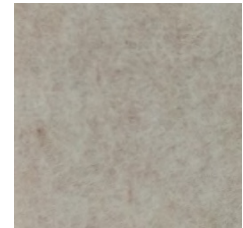
B-46 Orange



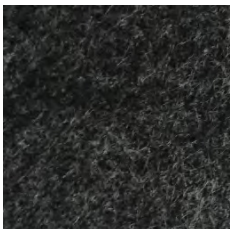
B-12 Dark Camel



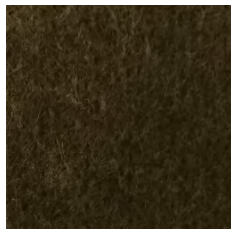
B-04 Light Camel



B-03 Charcoal



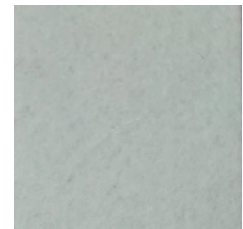
B-34 Coffee



B-43 Apple Green

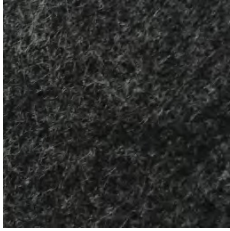


B-07 White

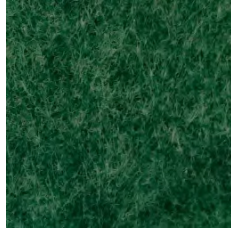


Standard Colours - 9mm thickness

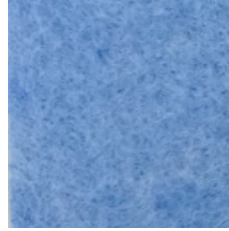
B-03 Sesame Black



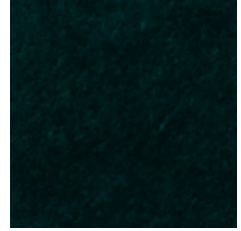
B-10 Grass Green



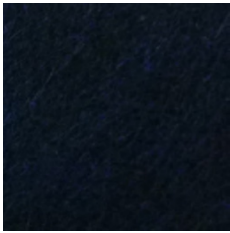
B-14 Light Blue



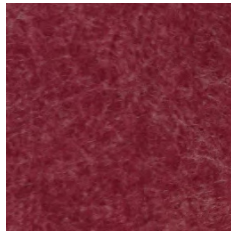
B-17 Dark Green



B-19 Navy Blue



B-24 Fuschia



B-26 Celadon



B-32 Brown



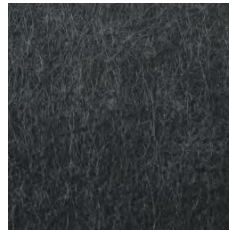
B-33 Light Pink



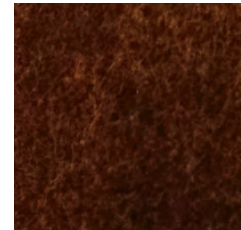
B-35 Dark Brown



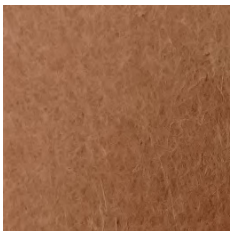
B-37 African Grey



B-39 Red Coffee



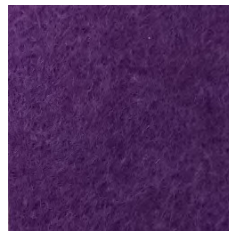
B-41 Milk Coffee



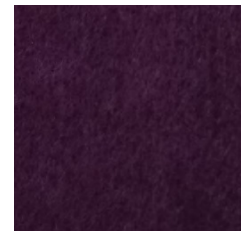
B-44 Walnut



B-49 Violet

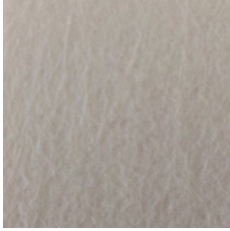


B-50 Deep Violet

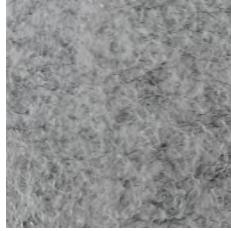


Standard Colours - 12mm thickness

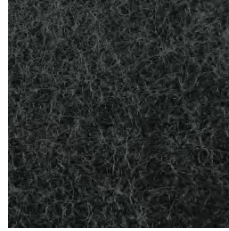
A-02 Creamy White



A-04 Silver Grey



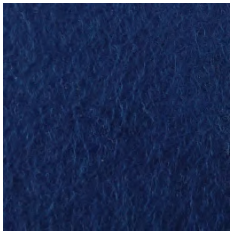
A-05 Sesame Black



A-07 African Grey



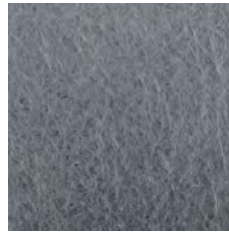
A-08 Royal Blue



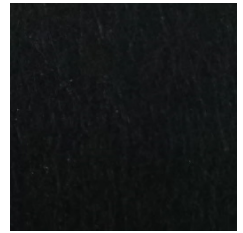
A-09 Khaki



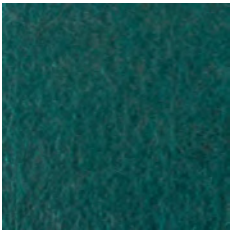
A-11 Water Grey



A-13 Black



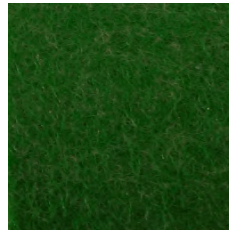
A-14 Lake Blue



A-15 Mustard



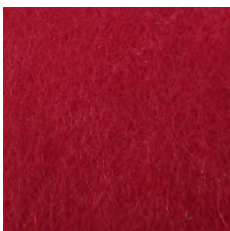
A-16 Turquoise



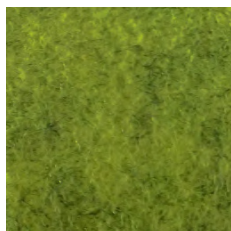
A-17 Orange



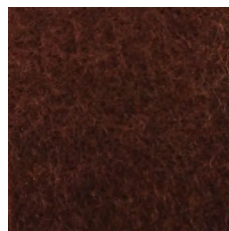
A-18 Red



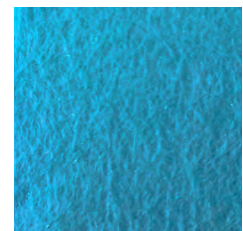
A-20 Honeybee Yellow



A-21 Brown

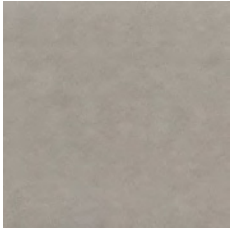


A-24 Sky Blue

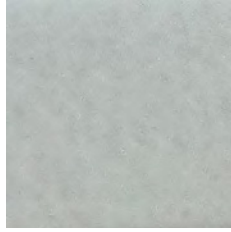


Standard Colours - 3mm thickness

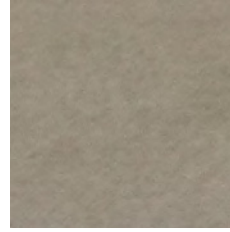
C-01 Pure White



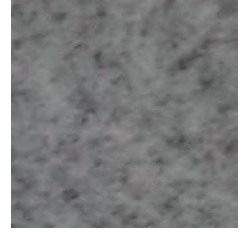
C-02 Water Grey



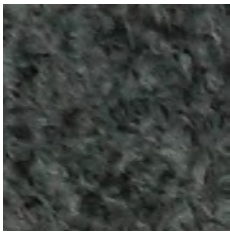
C-03 White



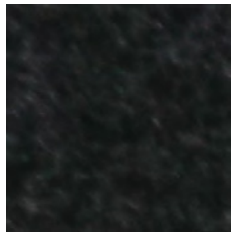
C-04 Silver Grey



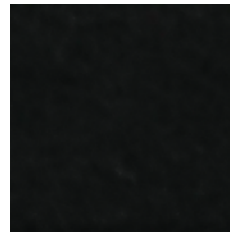
C-05 African Grey



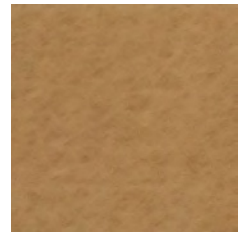
C-06 Sesame Black



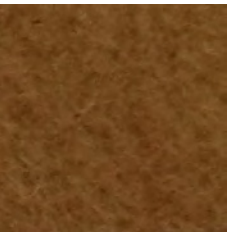
C-07 Black



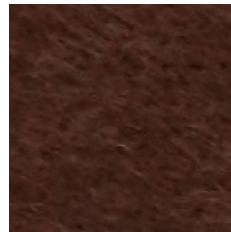
C-10 Light Yellow



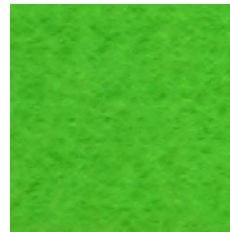
C-12 Dark Camel



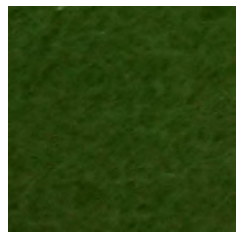
C-13 Coffee



C-14 Emerald



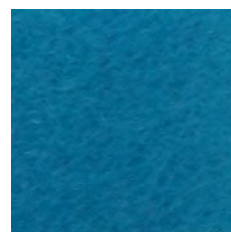
C-16 Apple Green



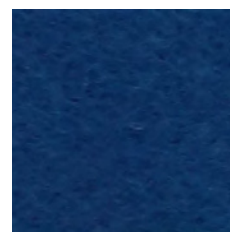
C-20 Milk Coffee



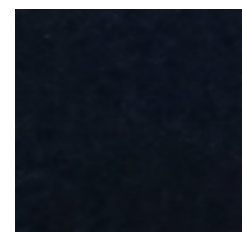
C-21 Peacock Blue



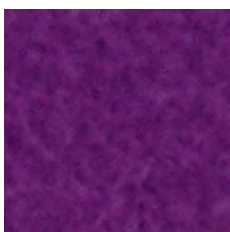
C-22 Royal Blue



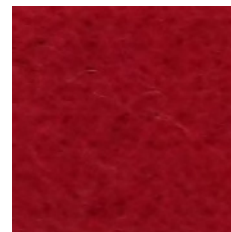
C-24 Navy Blue



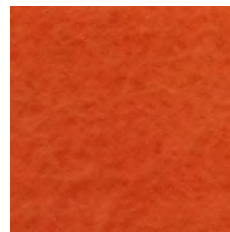
C-30 Deep Violet



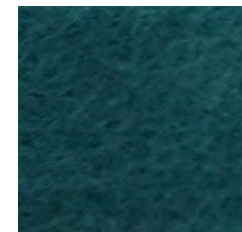
C-33 Red



C-38 Orange



C-42 Blue



Bring surfaces to life using progressive, attractive, distinctive, efficient, and cost effective solutions

I V Zndj g°XZM k^n°[dg°Vl Va !l Zha b Zl ndj i]ZgZ°°



Description

Cubics Acoustic Panels are sound absorbing panels developed with environmental friendliness in mind. Cubics Acoustic Panels offer additional benefits compared to traditional acoustic board material. They are installed as a completely finished surface, requiring no additional time or materials for covering and are 100% free of allergens, toxins, irritants, binding agents and formaldehyde.

Core Material

60% PET-recycled fiber and 40% PET-virgin fiber, and are 100% recyclable.

Fire Performance

ASTM E84 and
CAN/ULC S102 FSR

Thickness

Varies according to profile.

Panel Sizes

Varies according to profile.

Mounting Options

Concealed Nail, Decor
Screw, two-sided tape, or
Adhesive direct to wall

Applications

Theaters & home theaters
Gymnasiums & multipurpose rooms
Commercial & office buildings
Studios & production houses
Restaurants & night clubs
Government & municipal buildings
Schools & universities
Industrial & manufacturing facilities

Acoustical Performance

125	250	500	1000	2000	4000	*NRC
0.56	0.96	1.06	0.71	0.76	0.78	0.80

*Noise Reduction Co-efficient Test Method ISO 354:2003

PROFILES

CS Series

200 x 200 x 30mm



CS-01



CS-02



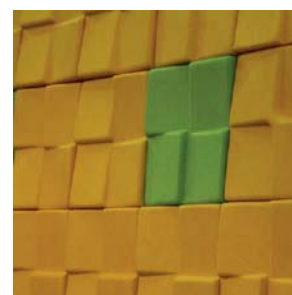
CS-03



CS-04



CS-05



CS-06

CM Series

300 x 300mm



CM-01



CM-02

PROFILES

CM Series

600 x 600 x 50mm



CM-03



CM-04



CM-05

CL Series

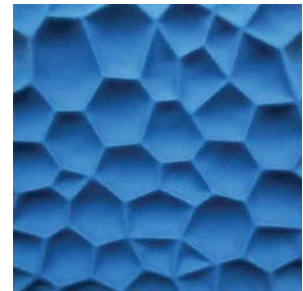
600 x 600 x 74mm



CL-01



CL-02



CL-03



CL-04



CL-05



CL-06

Standard Colours

B-08 Red



B-51 Emerald



B-01 Blue



B-25 Sky Blue



B-13 Black



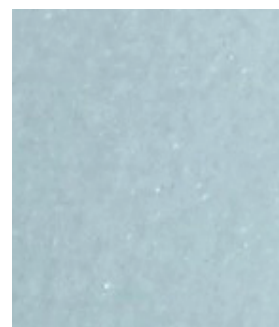
B-36 Moonlight Grey



B-11 Silver Grey



B-07 White



B-05 Saffron



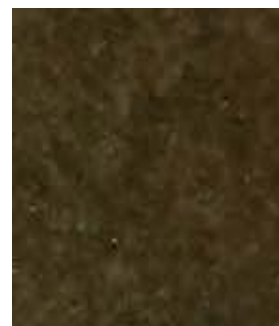
B-46 Orange



B-12 Dark Camel



B-34 Coffee



Description

Wallworks Barrel & Pyramid Diffusers are designed to balance and distribute sound reverberation evenly throughout designated spaces to provide specific audio control. By dispersing the sound waves, reverberation effects are controlled or tuned to give an area the required audio balance and acoustic ambience.

Recommended Uses

Wallworks Barrel & Pyramid Diffusers are effective when placed in a ceiling system, hung independently from the building structure, or installed on walls using standard steel corner gussets.

Product Close Up

Wallworks Barrel & Pyramid Diffusers have several unique features which make them ideal for situations where diffusion of sound is required. The shape and depth has been specifically engineered to provide optimum sound dispersion, the specifically designed edge detail of the Diffuser makes installation completely concealed and the simplest in the industry. The diffuser is made from a special fire-rated ABS thermo-formed plastic with an aggressive "hair-cell" surface texture providing superior sound reflection qualities.



Variations

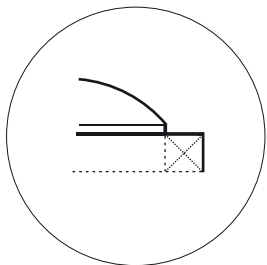
The Wallworks Diffuser comes in these standard sizes:

1. 610 mm x 610 mm (24" x 24")
2. 610 mm x 1219 mm (24" x 48")
3. 1219 mm x 1219 mm (48" x 48")

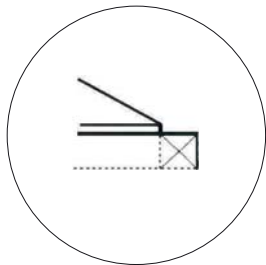
Diffusers are base white in colour. The Diffusers can be painted using acrylic-based paints without degradation to the acoustic performance. The units can be lined with fabric and/or acoustic fibreglass to give sound absorption in combination with the diffusion. Custom Diffusers are available to suit specific sound requirements, subject to minimum quantity orders.

Installation

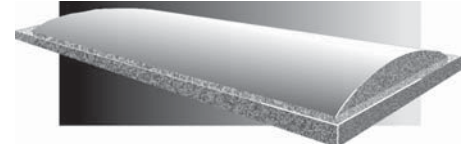
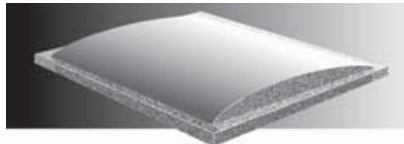
Installation of Diffusers is simple. When placing in a T-Bar ceiling grid, they are inserted the same way as the tile. On a flush-mount horizontal or vertical surface, the Diffusers are attached using our standard steel gussets. Other installation methods are also available to suit any type of site condition.



**BARREL
EDGE DETAIL**

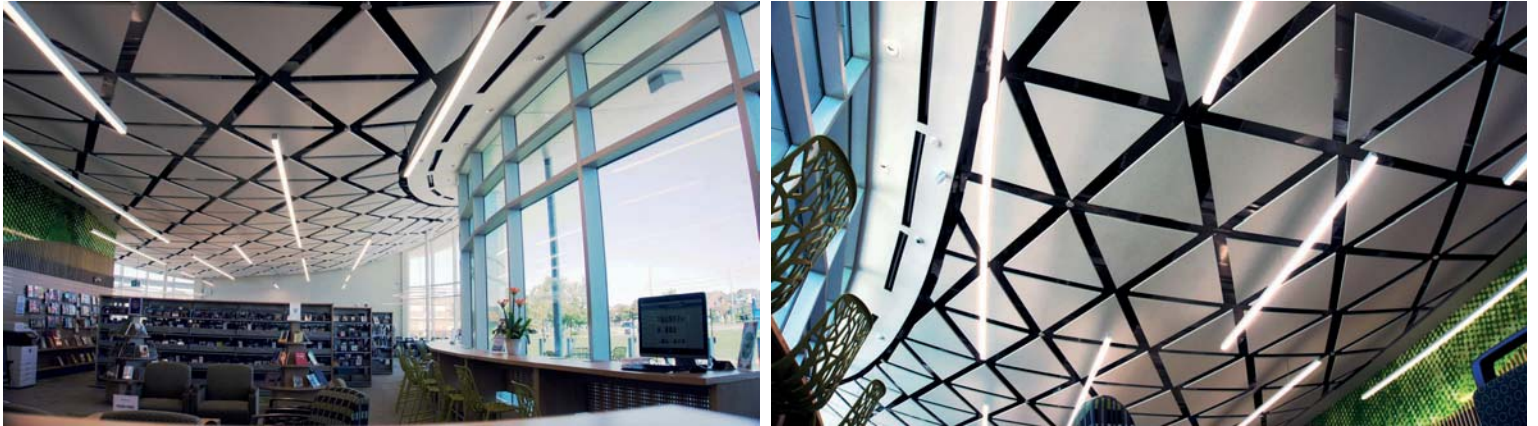


**PYRAMID
EDGE DETAIL**



Transform your space.

Wallworks Aspect acoustical panels provide outstanding sound absorption and a clean appearance with minimal installation effort.



Description

Aspect acoustical panels are the premier choice for applications that require high performance acoustic panels. Easy to install and available in a wide range of colours, sizes and shapes. Faced with any acoustic fabric, or a glass wool tissue that can be coloured to match any standard RAL colour.

Core Material

High density rigid acoustical fibreglass containing 46% post-consumer content.

Fire Performance

CAN/ULC S102: Flame Spread Index 25 or less. Smoke Developed Index 50 or less.
 ATSM E84: Flame Spread Index 20 or less. Smoke Developed Index 0.

Thickness Available range between 12mm and 40mm.

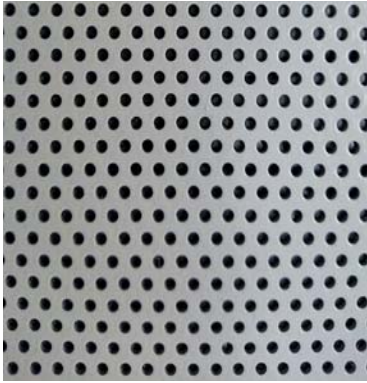
Panel Sizes
 Standard 24"x24", 24"x48"
 Custom sizes and shapes available

Mounting Options
 Walls: Impaling Clip or Adhesive direct to wall
 Suspended Ceilings: Standard hanger wire

Acoustical Performance

	125 Hz	250 Hz	500 Hz	1000 Hz	2000 Hz	4000 Hz	NRC
25mm	0.13	0.45	0.93	1.01	1.00	1.03	0.90





Description

Wallworks Perforated Metal acoustic Panels are the ideal choice for usage in applications requiring high performance, abuse-resistant acoustic panels that favour a clean finish.

Assembly Materials

Standard 22ga perforated sheet steel facing. Standard perforation size is 2.4 mm (3/32") circular holes on 4.8 mm (3/16") staggered centers, providing 23% open area. Custom gauges and perforation patterns available upon request.

Powder-coated finish on face of steel, available in all standard RAL colours. Other custom finishes may be available upon request.

Thickness

Standard 2" thick #2.5 / cu.ft. fibreglass acoustic underlay (may also substitute with mineral wool insulation), wrapped in black polyethelene. Other thicknesses and densities available.

Mounting Options

Custom framing and finishing system to suit site conditions and panel sizes. Mechanical fastener mounting system is standard.

Panel Sizes

Custom shapes, sizes and perforations available

Acoustical Performance

Frequency, Hz	125	250	500	1000	2000	4000	NRC
Absorption Coefficient	0.22	0.77	1.12	1.00	0.78	0.57	0.90



... green and environmentally conscious before it became an industry wide initiative...

Fabri-Lok® Disposal, Reclamation, Remanufacturing Program

Since 2008, Wallworks has offered and maintained a disposal, reclamation and remanufacturing program for used and leftover Fabri-Lok® track materials. We support environmental stewardship with re use of our product base work. The wall track systems can be stripped and resurfaced **over and over again** to recreate vibrant innovative surfaces using fresh fabrics, concepts and themes.

It is not necessary to strip the system down to the base wall or to apply new insulation to achieve an entirely new presentation.

Wallworks methodically picks up any and all left over or end cut pieces of our Fabri-Lok® track from the job site, and will arrange pick up of any of our track that may have been removed from an existing wall during renovation. Containers must be a minimum of 3'x3'x3' in size. Staple removal is mandatory. We will consolidate your scraps with others, grind and ship the powdered materials for use by manufactures of new PET products.

With an increased focus on the impact of our architectural environment on health, Wallworks offers collaborative, attractive and environmentally sensitive, acoustic solutions. Wallworks acoustic architectural products contribute to LEED Points, or are compliant with WELL standards

WALLWORKS, committed to partnerships for a healthy, sustainable future.



Medicine Hat Regional Hospital Redevelopment 2019



Wallworks products support and contribute to LEED points and/or compliance with incoming WELL Building Standards. For more information please visit our website. www.wallworks.com



THANK YOU TO OUR DONORS

Edmonton Mill Woods Breakfast Lions Club
 Southeast Rotary Club
 EllisDon Construction Services Inc
 Rohit Homes
 St. Peter's Columbus Club
 City of Edmonton
 Government of Alberta
 Edmonton Southgate Lions Club
 South Edmonton Rotary Club
 Edmonton Mill Woods Lions Club
 ...and many others.

WALLWORKS

ACOUSTIC.ARCHITECTURAL.PRODUCTS.INC.

INDUSTRY LEADER IN NOISE CONTROL & ARCHITECTURAL SPECIALTIES

Vancouver • Calgary • Edmonton • Regina • Saskatoon • Winnipeg • Toronto • Ottawa • Montreal

Head Office: 424-51st Ave SE, Calgary, AB, T2H 0M7 T: 403.255.3550 F: 403.686.2592

www.wallworks.com • info@wallworks.com

