

The Art of Sound Design ... Fabric as an Architectural Finish



FABRI-LOK®
TENSIONED FABRIC SYSTEM



THE SYSTEM: The FABRI-LOK® Tensioned Fabric System is a design product that enables fabric to be installed over new or existing surfaces. The framework is comprised of U.L. fire retardant rigid vinyl locking channels which are applied to the perimeter of the wall or area to be covered, such that panels are created per specification – shape, width, height, and thickness. The sub-surfaces (acoustic, tackable, nailable, or combinations) are installed within the perimeter of the framework and sandwiched between the fabric and the wall (substrate). Fabric is then stretched over the framework. A proprietary affixing tool inserts the fabric border through the framework's inlet jaws and locks it into the storage channel, leaving a clean, smooth, finished edge.



DESIGN ADVANTAGES: The FABRI-LOK® System can be applied over virtually any substrate (drywall, brick, concrete, tile, steel) with minimal wall preparation. The system is constructed and installed on site ensuring proper alignment of panels and other architectural details. Since the system is not prefabricated, design changes may be made on site; prior to installation. The System is designed to accommodate existing site conditions, with profiles to serve the purpose without "building out" or "customizing" the framework or the wall details to suit the design.



APPLICATIONS AND USAGE: The system may be applied to walls, ceilings, doors, columns, archways, partitions, and other surfaces.

Typical areas of installation are lobbies, corridors, elevators, reception rooms, executive offices, boardrooms, conference rooms, theatres and auditoriums, dining rooms, teleconference and audio/visual (media) rooms, computer rooms, open office areas, home theatres and specialty museum applications.

FABRIC SELECTION: The FABRI-LOK® System is designed to accommodate most fabrics including suitable leathers. Exceptions are translucent fabrics due to their see-through characteristics and hydrophilic fabrics containing a high percentage of fibers such as rayon, acetate, or spun nylon which are unsuitable for any upholstered wall system as they absorb moisture, and become unstable (e.g. elongate).

All fabrics must be flame retardant in accordance with ASTM E84 or CAN 4 S102 Tunnel Test.

ACOUSTIC AND INSULATION: The FABRI-LOK® System framework provides a recessed area for installation of acoustic underlay which allows the system to be "tuned" to meet virtually all acoustic requirements at reasonable cost.

TACKABLE AND NAILABLE: Tackable, nailable or combination subsurfaces are available per project requirements and may be readily designed into the system.

WALL OBSTACLES NO PROBLEM: Due to the designed flexibility of the FABRI-LOK® System the framework may be applied around doors, windows, archways, pillars, and circular shapes in a neat, clean manner while electrical outlets and switches are merely shimmed to eliminate fabric indentations. Consult your representative for details.

LOW MAINTENANCE AND CHANGE-ABILITY: While it is recommended fabrics be stain-guarded with a proprietary protective finish, most fabrics may be cleaned by vacuuming or with standard spot removal techniques. FABRI-LOK® allows you to have the fabric changed at your discretion without having to expend the cost of replacing the entire assembly.



INSTALLATION TECHNIQUES: The FABRI-LOK® System's versatility allows the designer or acoustic consultant to select the application which best suits their needs.

There are three styles of Trak. One style allows a flush fabric finish to ceilings, corners, etc. (hidden side), another style offers a finished edge suitable for island or exposed edge applications while another is for tightly adjoining panels. The variation allows the designer to obtain any look they desire.



The Art of Sound Design by

FABRI-LOK®



SPECIFICATIONS:

PART 1 - GENERAL

1.01 SCOPE OF WORK

- .A Supply and install FABRI-LOK® Tensioned Fabric System as supplied by FABRI-LOK® Systems.
- .B Related Work Specified Elsewhere
 - .1 Preparation of smooth, flat, and Plumb substrate.
 - .2 Architectural Woodwork, Masonry, Door and Frames, Hardware, Gypsum Wallboard, Plastering, Ceilings, Wall Coverings, Painting, and Electrical Work.

1.02 STANDARDS

The wall treatment system shall conform to ASTM E84 or CAN4 S102, Class 1 or A Fire Hazard Classification.

1.03 QUALIFICATIONS

Installation work shall be performed by certified Dealers. Proof of certification is required.

1.04 SUBMITTALS

Submit manufacturer's product specifications and manufacturer's standard warranty against defects in materials and workmanship.

1.05 PRODUCT HANDLING

Store materials of the ground, protected from dirt, dust, damage, and soiling.

PART 2 - PRODUCTS

2.01 SYSTEM DESCRIPTION

- .A The system shall consist of site Installed and fabricated, concealed FABRI-LOK® system.

2.02 SYSTEM COMPONENTS

- .A FABRI-LOK® Rigid Vinyl Locking Channels
 - .1 PROFILE (specify) Square (SE), Radius (RE), Bevel (BE), Flat (FE) edge of panel.
 - .2 THICKNESS (specify) 3/8", 1/2", 1", 2", other.

- .B SUBSURFACE (underlay)
 - .1 TYPE (specify)
 - .1 Airspace only
 - .2 Acoustical / HIR
 - .3 Tackable
 - .4 Nailable
 - .5 Combination: Acoustic, Tackable, Nailable, per plan
 - .2 THICKNESS (specify) 3/8", 1/2", 1", 2", other.
- .C FABRIC: FABRI-LOK® "Solution Fabric" as selected by the Consultant from manufacturer's standard range.
 - .1 Name of Fabric Manufacturer
 - .2 Fabric Width
 - .3 Contents
 - .4 Style Number
 - .5 Color

* FABRI-LOK® allows use of fabric from several manufacturers in a variety of patterns and colors. Please call your local dealer to discuss fabric selection.
- .D *OPTIONAL Fabric Treatment: FABRI-PEL site applied proprietary protective finish. Improves fabric's stain, soil, fade, and abrasion resistance.

PART 3 - EXECUTION

3.01 EXISTING CONDITIONS

- .A Examine the condition of the substrate and the conditions under which the work of this section is to be performed. Notify the Contractor, in writing, of any unsatisfactory conditions. Do not proceed with the work until the conditions have been corrected in a manner satisfactory to the installer.
- .B Do not install acoustical wall panel fabric in any space until:
 - .1 The space has been enclosed and is weather-tight.
 - .2 All wet work has been completed and is dry.



- .3 Painting is completed and wall, base and floor covering installed.
- .4 Ambient temperature and humidity are continuously maintained at values indicated for final acceptance of building or occupancy of space.

3.02 INSTALLATION

- .A Field measure each wall area to establish the exact layout per elevations.
- .B Apply the FABRI-LOK® framework of rigid vinyl locking channels in the areas designated to receive treatment, as shown on the drawings.
- .C Fasten as required for specific substrates in accordance with manufacturer's instructions.
- .D Install the FABRI-LOK® framework plumb and straight.
- .E Install the sub-surface material, continuous and flush to shoulder of the track.
- .F Cut the fabric from each roll maintaining the sequence of drops and matching direction of weave.
- .G Install the fabric from the face side once the framework is securely fastened, to ensure perfect vertical and horizontal grain alignment and pattern match.
- .H Fabric shall be stretched over and locked in to the framework with sufficient tension to ensure a smooth, firm, and secure fabric surface.

3.03 CLEANING AND PROTECTION

- .A Clean exposed surfaces of wall panels. Trim and remove all loose threads.
- .B Remove surplus materials, rubbish, and debris resulting from the FABRI-LOK® installation.



“CUSTOM IS STANDARD” with the choice of the following installation options:

- Individual abutted Vertical Panels, unlimited in height - the fabric determines maximum width. Abutments may be square (monolithic), radius or bevel edge.
- Individual abutted Horizontal Panels, unlimited in width - the fabric determines maximum height. Abutments may be square (monolithic), radius or bevel edge.
- Reveals - fabric panels may be designed in combination with matching or contrasting fabric, laminate, veneer, chrome, or brass reveals in square, radius or bevel profile edges for décor coordination or dimensional effect - vertically, horizontally, or outline framed.
- One continuous fabric expanse comprised of unobtrusive tailored, sewn seams allows much larger than fabric width panels.
- The system can be applied to conform to almost any surface contour - convex, concave, circular, irregular, or angular configurations.

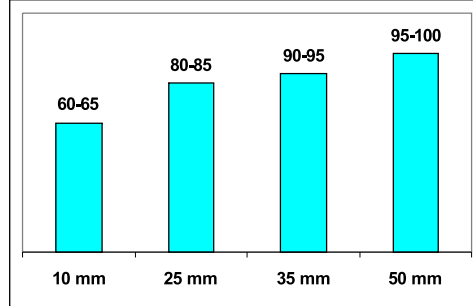


FABRI-LOK® System adds the finishing touch with:

- Fabrics that perfectly match or coordinate with furniture or carpeting.
- Choice of acoustic, tackable, or combination underlay.
- A unique Trak system offering choice of vertical, horizontal, curved, angular or irregular panel configurations followed to exacting tolerances.

CUSTOM ACOUSTICS: To accommodate the needs of additional depths for some acoustic requirements the Trak is merely mounted on FABRI-LOK® spacers to give the depth required. Acoustic underlay may be configured with septums or tuned combinations to allow one to meet specific acoustic performance criteria.

GENERAL ACOUSTIC DATA
NRC WITH GLASS FIBRE UNDERLAY



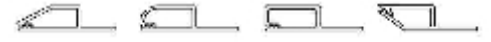
DENOTES THICKNESS OF UNDERLAY



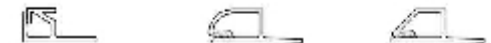
THERMAL QUALITIES: “R” Factor (Resistance to Heat Gain or Loss) The FABRI-LOK® System installed over typical interior walls can increase the “R” Factor by 22% to 350%. The percentage increase varies depending upon the exterior wall construction and the underlay chosen.



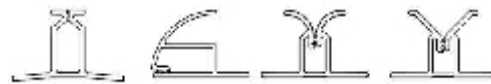
3/8" TRACK



1/2" TRACK



1" TRACK



CUSTOM TRACK



2" TRACK



1" CEILING TRACK



FABRI-LOK®
TENSIONED FABRIC SYSTEM