

“Fabric as an Architectural Finish”



FABRI-LOK®
Tensioned Fabric System

THE SYSTEM: The FABRI-LOK® Tensioned Fabric System is a proprietary product that enables a large variety of textile goods to be installed over new and existing surfaces. The framework is comprised of fire retardant, rigid vinyl locking channels which when applied to a wall or ceiling area creates a space that may be made either acoustic, tackable, reflective or combination there of. The sub-surfaces (acoustic, tackable, nailable, or combinations) are installed within the perimeter of the framework and sandwiched between the fabric and the wall (substrate). Fabric is then stretched over the framework. A purpose made tool inserts the fabric into the framework's jaws securing it in the storage channel, resulting in a clean, smooth, finished edge.



DESIGN ADVANTAGES: The FABRI-LOK® System can be applied over virtually any substrate (drywall, brick, concrete, tile, steel) with minimal wall preparation. Since the system is site-built proper alignment of panels and coordination with other architectural details is insured. Since the system is not prefabricated, design changes may be made on site; prior to installation. The System is designed to accommodate existing site conditions, with profiles to serve the purpose without "building out" or "customizing" the framework or the wall details to suit the design.



APPLICATIONS AND USAGE: The system may be applied to walls, ceilings, doors, columns, archways, partitions, and other surfaces. Typical areas of installation are lobbies, corridors, elevators, reception rooms, executive offices, boardrooms, conference rooms, theatres and auditoriums, dining rooms, teleconference and audio/visual rooms, computer rooms, open office areas, home theatres and specialty museum applications.

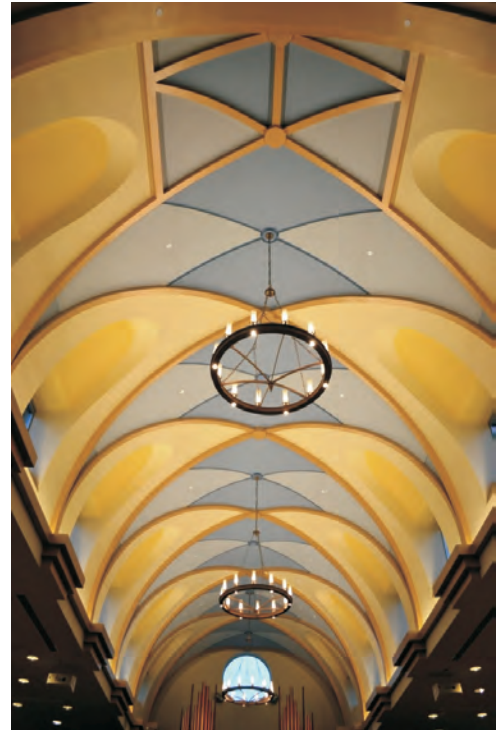
FABRIC SELECTION: The FABRI-LOK® System is designed to accommodate most fabrics, leathers and some wall carpets. Translucent fabrics will require the addition of a liner to prevent read through of panel core. Fabrics containing over 17%, by content of fibers such as rayon, acetate, or spun nylon require an acrylic back coat to ensure fabric remains taut once installed.

PANEL CORE: The FABRI-LOK® System framework provides a recessed area for installation of different densities and types of panel cores. Panel cores may be sound absorbent, tackable, reflective, installed singly or in combination, to achieve virtually any acoustic requirement.



WALL OBSTACLES NO PROBLEM: Due to the designed flexibility of the FABRI-LOK® System, the framework may be applied around doors, windows, archways, pillars, and circular shapes in a neat, clean manner. The installation of lights, artwork, electrical outlets and other types of penetrations are easily accommodated. Consult your representative for details.

LOW MAINTENANCE AND CHANGE-ABILITY: Most fabrics may be cleaned by vacuuming or with standard spot removal techniques. If required, finishes installed with FABRI-LOK® can be removed and replaced on site, without having to remove the panel core and frame, preventing down time and otherwise expensive repairs.



INSTALLATION TECHNIQUES: The FABRI-LOK® Systems versatility allows the designer or acoustic consultant to select the application which best suits their needs. There are three basic styles of Track. One style allows a flush fabric finish to ceilings, corners, baseboards and adjoining walls, another style offers a finished edge, suitable for island panels with exposed edges, while another is for tightly adjoining panels. In addition there are three standard edge profiles; square, round and bevel. Custom profiles to suit your particular requirements are available upon request.



“CUSTOM IS STANDARD” with the choice of the following installation options:

- Individual abutted Vertical Panels, unlimited in height - the fabric determines maximum width. Choose either: square (monolithic), radius bevel edge, or combination.
- Individually abutted Horizontal Panels, unlimited in width - the fabric determines maximum height. Edges may be square (monolithic), radius or bevel.
- Reveals - fabric panels may be designed in combination with matching or contrasting fabric, laminate, veneer, chrome, or brass reveals in square, radius or bevel profile edges for décor coordination or dimensional effect - vertically, horizontally, or outline framed.
- One continuous fabric expanse comprised of unobtrusive tailored, seams allows much larger than fabric width panels.
- The system can be made to conform to almost any surface contour - convex, concave, circular, irregular, or angular configurations.
- Three dimensional panels.



CUSTOM ACOUSTICS: To accommodate the needs of additional depths for some acoustic requirements the Trak is mounted on purpose made battens to create the depth required. Acoustic underlay may be configured with septums or tuned combinations to allow one to meet specific acoustic performance criteria.



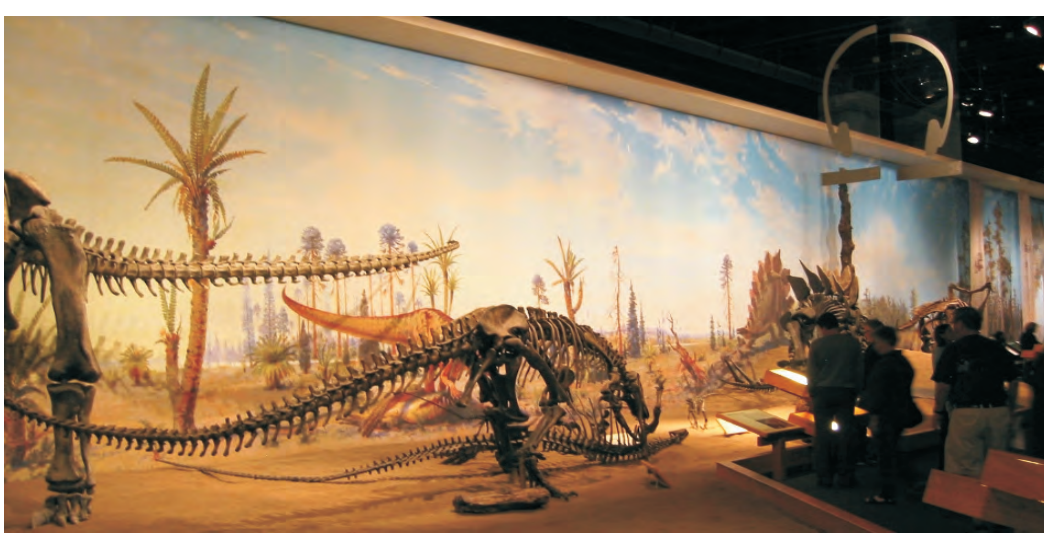
THERMAL QUALITIES: “R” Factor (Resistance to Heat Gain or Loss) The FABRI-LOK® System installed over typical interior walls can increase the “R” Factor by 22% to 35%. The percentage increase will vary depending upon the exterior wall construction and the type and thickness of underlay chosen..



FABRI-LOK® System adds the finishing touch with:

- Fabrics that perfectly match or coordinate with furniture or carpeting.
- Choice of acoustic, tackable, or combination underlays.
- A unique Trak system offering choice oververtical, horizontal, curved, angular or irregular panel configurations manufactured to exacting tolerances.





Museum Fabric Murals

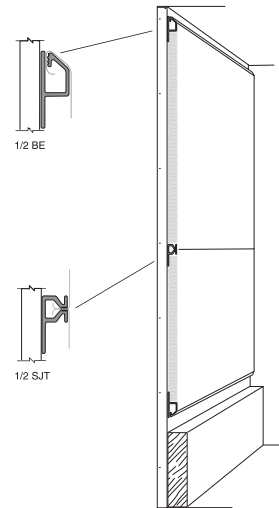


Museum Fabric Murals



Custom Fabric on Bedroom Walls

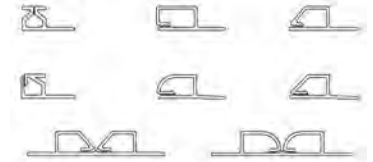
APPLICATION EXAMPLE



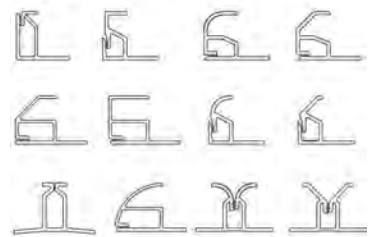
3/8" TRACK



1/2" TRACK



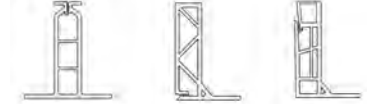
1" TRACK



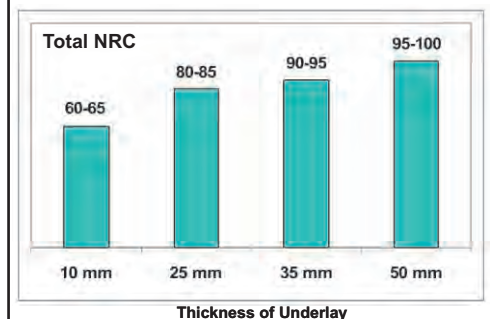
CUSTOM TRACK



2" TRACK



GENERAL ACOUSTIC DATA



WALLWORKS ACOUSTIC ARCHITECTURAL PRODUCTS INC.

Head Office: 424-51 Ave SE, CALGARY, AB, T2H 0M7 T: 403.255.3550 F: 855.896.8893

VANCOUVER.CALGARY.EDMONTON.REGINA.SASKATOON.WINNIPEG.TORONTO.OTTAWA.MONTREAL

Website: www.wallworks.com

Email: info@wallworks.com

