

PET Acoustic Panels

2020
UPDATE

Bring surfaces to life using progressive, attractive, distinctive, efficient, and cost effective solutions ~ You can take your creativity for a walk, we'll meet you there!



Description

Cubics Acoustic Panels are sound absorbing panels developed with environmental friendliness in mind. Cubics Acoustic Panels offer additional benefits compared to traditional acoustic board material. They are installed as a completely finished surface, requiring no additional time or materials for covering and are 100% free of allergens, toxins, irritants, binding agents and formaldehyde.

Core Material

60% PET-recycled fiber and 40% PET-virgin fiber, and are 100% recyclable.

Fire Performance

ASTM E84 and
CAN/ULC S102 FSR

Thickness

Varies according to profile.

Panel Sizes

Varies according to profile.

Mounting Options

Concealed Nail, Decor
Screw, two-sided tape, or
Adhesive direct to wall

Applications

Theaters & home theaters
Gymnasiums & multipurpose rooms
Commercial & office buildings
Studios & production houses
Restaurants & night clubs
Government & municipal buildings
Schools & universities
Industrial & manufacturing facilities

Acoustical Performance

125	250	500	1000	2000	4000	*NRC
0.56	0.96	1.06	0.71	0.76	0.78	0.80

*Noise Reduction Co-efficient Test Method ISO 354:2003

2020
UPDATE

PET Acoustic Panels

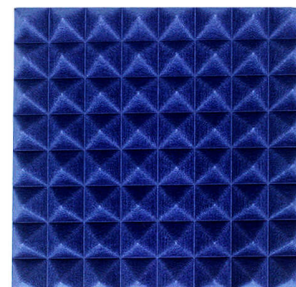
CS Series



CS-01
200x200x35mm &
600x600x50mm



CS-02
200x200x30mm



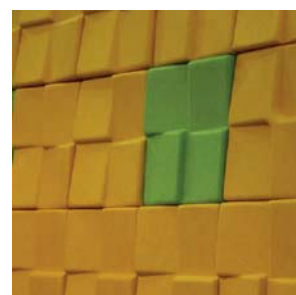
CS-03
600x600x74mm



CS-04
250x250x60mm



CS-05
200x200x30mm



CS-06
200x200x30mm

CM Series



CM-02
300x300x130mm



CM-03
500x500x60mm



CM-04
500x500x60mm



CM-05
500x500x60mm

CF Series



CF-01
273x100x35mm



CF-02
160x140x25mm



CF-03
470x405x60mm



CF-04
300x80x20mm



CF-05
160x140x50mm



CF-06
300x300x25mm

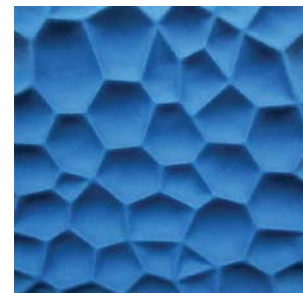
CL Series



CL-01
600x600x74mm



CL-02
600x600x74mm



CL-03
600x600x74mm



CL-04
600x600x60mm



CL-05
600x600x74mm



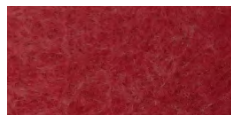
CL-06
600x600x74mm

2020
UPDATE

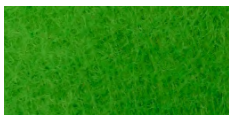
PET Acoustic Panels

Standard Colors

B-08 Red



B-51 Emerald



B-01 Blue



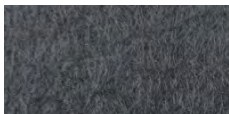
B-25 Sky Blue



B-13 Black



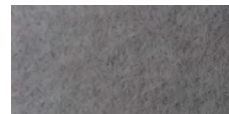
B-36 Moonlight Grey



B-11 Silver Grey



B-30 Water Grey



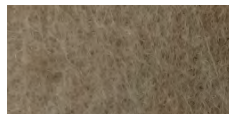
B-05 Saffron



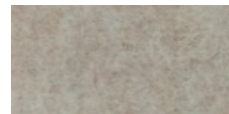
B-46 Orange



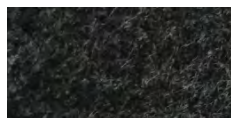
B-12 Dark Camel



B-04 Light Camel



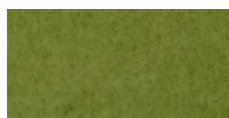
B-03 Charcoal



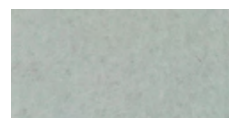
B-34 Coffee



B-43 Apple Green



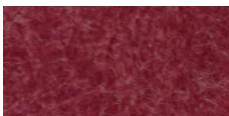
B-07 White



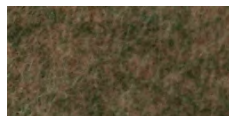
B-19 Navy Blue



B-24 Fuschia



B-26 Celadon



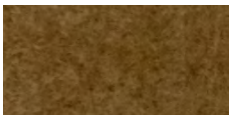
B-32 Brown



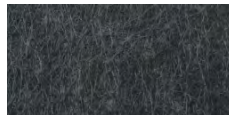
B-33 Light Pink



B-35 Dark Brown



B-37 African Grey



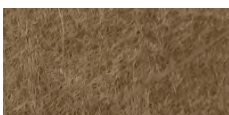
B-39 Red Coffee



B-41 Milk Coffee



B-44 Walnut



B-49 Violet



B-50 Deep Violet



B-28 Gold Bronze



Note: Colors may vary slightly. Control samples recommended prior to ordering.